

## Non-isolated Positive Output Buck/Boost AC/DC Converter

Prepared by: Jan Grulich  
ON Semiconductor



ON Semiconductor®

<http://onsemi.com>

### APPLICATION NOTE

This application note describes how to easily design a simple, non-isolated AC/DC converter for powering the low voltage control portion of line-powered applications that use a triac or SCR power switch. Examples of such applications include dishwashers, microwave ovens, coffee machines, illumination, etc. Compared to passive solutions using resistors or capacitors to reduce the voltage, this design has significant advantages such as:

- Wide input voltage range 85 – 265 VAC
- Smaller size, lower weight, lower total cost
- Good line and load regulation, no need of additional linear regulators
- Efficient design with up to 80% efficiency
- Overload, short circuit and thermal protection
- Convenient for mass production due to SMD devices
- Universal design for wide range of output currents and voltages

The monolithic power switcher used in this application greatly simplifies the total design and reduces time to production. ON Semiconductor's NCP1010 – 1014 family, a new line of Power Switchers, is ideal for this purpose. The NCP101x is offered in a SOT-223 package for reduced size, and is suitable for mass production.

The design consists of the input filter, rectifier with filtering capacitor, the power stage with switcher and inductor, output ultrafast rectifier, output filtering capacitor, the feedback loop with Zener diode and optocoupler, and an indicator LED. The only component necessary for proper powering of the IC is the  $V_{CC}$  capacitor, since the IC is directly powered from the HV Drain circuit via an internal voltage regulator. To eliminate noise at the feedback input, a small ceramic capacitor of around 1 nF should be connected as close to the FB pin as possible.

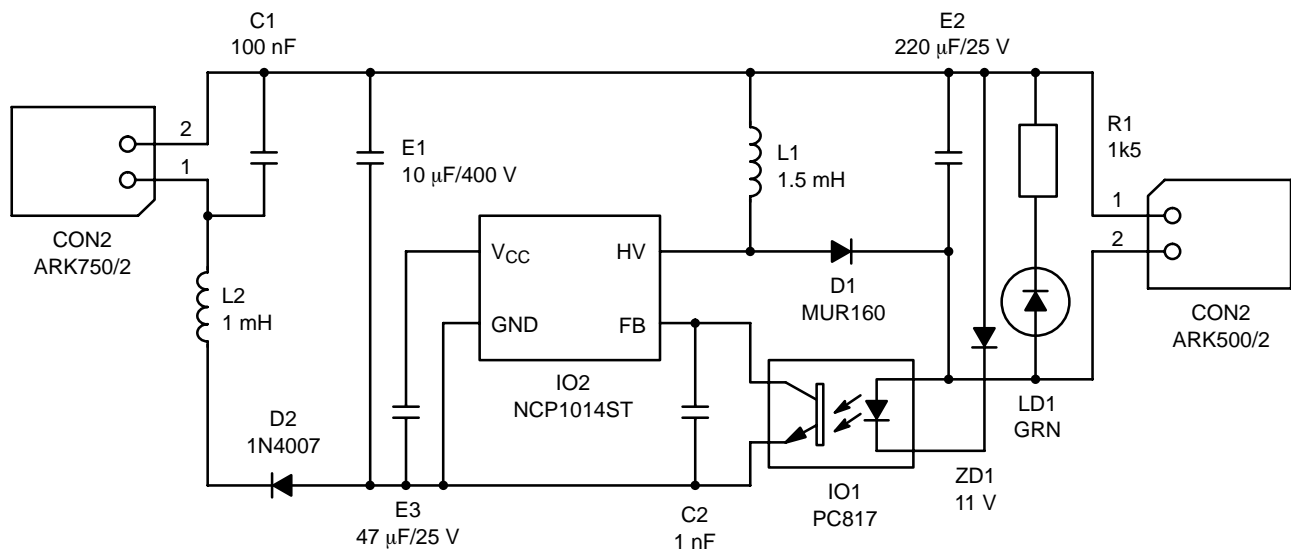


Figure 1. Complete Schematic Diagram of the 12 V/0.2 A Converter

SELECTION OF CRITICAL COMPONENTS

**Inductor Selection**

The desired output power determines the minimum value of the inductance. This value is dependent on the mode of operation. A reduced inductor value results in Discontinuous Conduction Mode of operation (DCM). In practice, the switch-over point between Continuous Conduction Mode of operation (CCM) and DCM is commonly set to be slightly below maximum output power. This achieves a reasonable compromise between inductor size and ripple current, efficiency, and overall lower cost. The only significant negative aspect of this particular operating mode is a higher peak-to-average current ratio in the inverter circuit.

The current ripple in the inductor during the  $T_{on}$  time may be expressed by the equation

$$\Delta I_{ripple}(T_{on}) = T_{on} \cdot \left( \frac{V_{min} - V_{ds}}{L_{min}} \right)$$

$T_{on}$  = ON time, internal power switch is on

$V_{min}$  = Minimum rectified input voltage

$V_{ds}$  = Drain-to-Source voltage drop

$L_{min}$  = Minimum inductor value.

The current ripple in the inductor during the  $T_{off}$  time may be expressed by the equation

$$\Delta I_{ripple}(T_{off}) = T_{off} \cdot \left( \frac{V_o}{L_{min}} \right)$$

$T_{off}$  = OFF time, internal power switch is off

$V_o$  = Output voltage.

The current through the inductor at the beginning of the  $T_{on}$  time is

$$I_{init} = I_{set} - \Delta I_{ripple}$$

$I_{set}$  = Peak switching current set by the FB loop.

The average current through the inductor over one switching cycle can be expressed by equation

$$I_c = f_{op\_min} \cdot \left( \frac{\Delta I_{ripple}}{2} + I_{init} \right) \cdot T_{on} + \left( \frac{\Delta I_{ripple}}{2} + I_{init} \right) \cdot T_{off}$$

$I_c$  = Inductor operating current

$f_{op\_min}$  = Minimum operating frequency.

The theoretical minimum inductor value is given by the expression

$$L_{min} = \frac{(2 \cdot (V_o \cdot I_o))}{(\Delta I_{ripple}^2 \cdot f_{op\_min})}$$

$I_o$  = Output DC current.

The theoretical maximum output power in DCM will be

$$P_{out\_max} = L_{min} \cdot \Delta I_{ripple}^2 \cdot \frac{f_{op\_min}}{2}$$

The theoretical maximum output power in CCM will be

$$P_{out\_max} = L_{min} \cdot I_{set} \cdot \Delta I_{ripple} \cdot f_{op\_min} - L_{min} \cdot \Delta I_{ripple}^2 \cdot \frac{f_{op\_min}}{2}$$

The current ripple in the inductor during the normal operation in the DCM or CCM will be

$$\Delta I_{ripple} = \frac{(V_{min} \cdot V_o)}{((V_{min} + V_o) \cdot f_{op\_min} \cdot L_{min})}$$

**Table of Preselected Inductors** ( $V_{min} = 120$  V,  $V_o = 12$  V,  $f_{op\_min} = 59$  kHz)

Inductance (μH)	Coilcraft Part Number (see appendix for address)	$\Delta I_{ripple}$ (A)	Output Current (A)
470	RFB0810-471	0.39	0.18
680	RFB0810-681	0.27	0.24
820	RFB0810-821	0.23	0.26
1000	RFB0810-102	0.18	0.27
1500	RFB0810-152	0.12	0.30

The output current is the theoretical value and must to be multiplied by the efficiency (~ 0.7).

# AND8191/D

## Freewheeling Diode Selection

The freewheeling diode needs to be selected according to the mode of operation. For CCM operation an ultra-fast

diode with reverse recovery time  $t_{rr} < 35$  ns must be used. For the DCM operation a standard ultra-fast diode with  $t_{rr} < 75$  ns is adequate.

**Table of Preselected Freewheeling Diodes**

Part number	$V_{RRM}$ (V)	$I_{F(AV)}$ (A)	$t_{rr}$ (ns)	Package
MUR160	600	1.0	75	Axial Lead
MURA160T3	600	1.0	75	SMD SMA
MURS160T3	600	1.0	75	SMD SMB
MURS260T3	600	2.0	75	SMD SMB

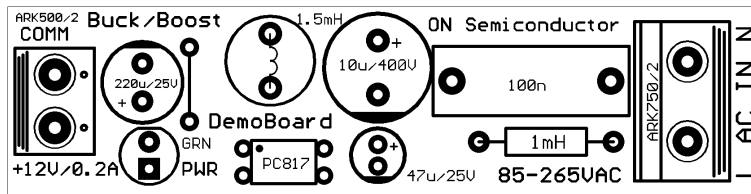
## Electrical Specification of the Example in Figure 1:

Input: 85 – 265 VAC

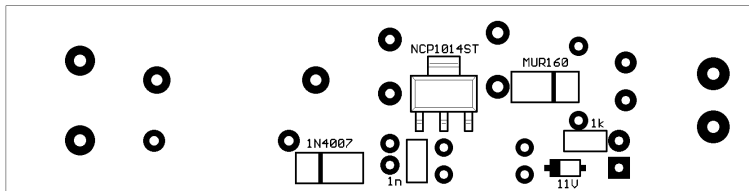
Output: + 12 V / 200 mA

Note: The polarity is relative to the common line.

## COMPONENT LAYOUT

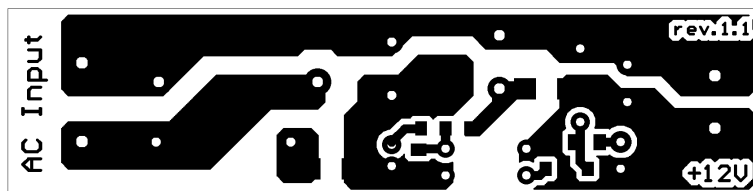


**Figure 2. Component Layout – Top Side**



**Figure 3. Component Layout – Bottom Side**

## PCB LAYOUT



**Figure 4. PCB Layout**

**EMI Test Results:**

**Test Conditions:**

Input: 230 VAC

Output: 11.7 VDC

Load: Resistive 68 R

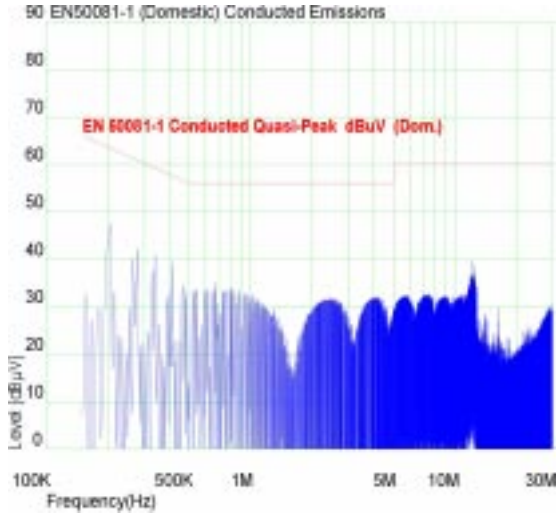


Figure 5. Conducted EMI

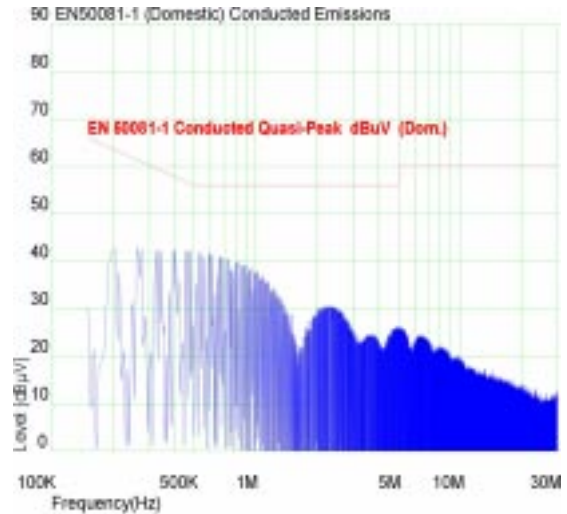


Figure 6. Magnetic Radiation

**Contact Address of the Inductor Manufacturer:**

**Coilcraft**

1102 Silver Lake Road, Cary IL 60013

800-322-2645

847-639-6400 Fax 847-639-1469

21 Napier Place


Wardpark North, Cumbernauld

Scotland G68 0LL

Telephone (Int) : 44 (0)1236 730595

Fax (sales) : 44 (0)1236 730627

www.coilcraft.com

**ON Semiconductor** and  are registered trademarks of Semiconductor Components Industries, LLC (SCILLC). SCILLC reserves the right to make changes without further notice to any products herein. SCILLC makes no warranty, representation or guarantee regarding the suitability of its products for any particular purpose, nor does SCILLC assume any liability arising out of the application or use of any product or circuit, and specifically disclaims any and all liability, including without limitation special, consequential or incidental damages. "Typical" parameters which may be provided in SCILLC data sheets and/or specifications can and do vary in different applications and actual performance may vary over time. All operating parameters, including "Typicals" must be validated for each customer application by customer's technical experts. SCILLC does not convey any license under its patent rights nor the rights of others. SCILLC products are not designed, intended, or authorized for use as components in systems intended for surgical implant into the body, or other applications intended to support or sustain life, or for any other application in which the failure of the SCILLC product could create a situation where personal injury or death may occur. Should Buyer purchase or use SCILLC products for any such unintended or unauthorized application, Buyer shall indemnify and hold SCILLC and its officers, employees, subsidiaries, affiliates, and distributors harmless against all claims, costs, damages, and expenses, and reasonable attorney fees arising out of, directly or indirectly, any claim of personal injury or death associated with such unintended or unauthorized use, even if such claim alleges that SCILLC was negligent regarding the design or manufacture of the part. SCILLC is an Equal Opportunity/Affirmative Action Employer. This literature is subject to all applicable copyright laws and is not for resale in any manner.

**PUBLICATION ORDERING INFORMATION**

**LITERATURE FULFILLMENT:**

Literature Distribution Center for ON Semiconductor  
 P.O. Box 61312, Phoenix, Arizona 85082-1312 USA  
**Phone:** 480-829-7710 or 800-344-3860 Toll Free USA/Canada  
**Fax:** 480-829-7709 or 800-344-3867 Toll Free USA/Canada  
**Email:** orderlit@onsemi.com

**N. American Technical Support:** 800-282-9855 Toll Free USA/Canada

**Japan:** ON Semiconductor, Japan Customer Focus Center  
 2-9-1 Kamimeguro, Meguro-ku, Tokyo, Japan 153-0051  
**Phone:** 81-3-5773-3850

**ON Semiconductor Website:** <http://onsemi.com>

**Order Literature:** <http://www.onsemi.com/litorder>

For additional information, please contact your local Sales Representative.